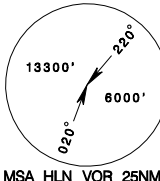
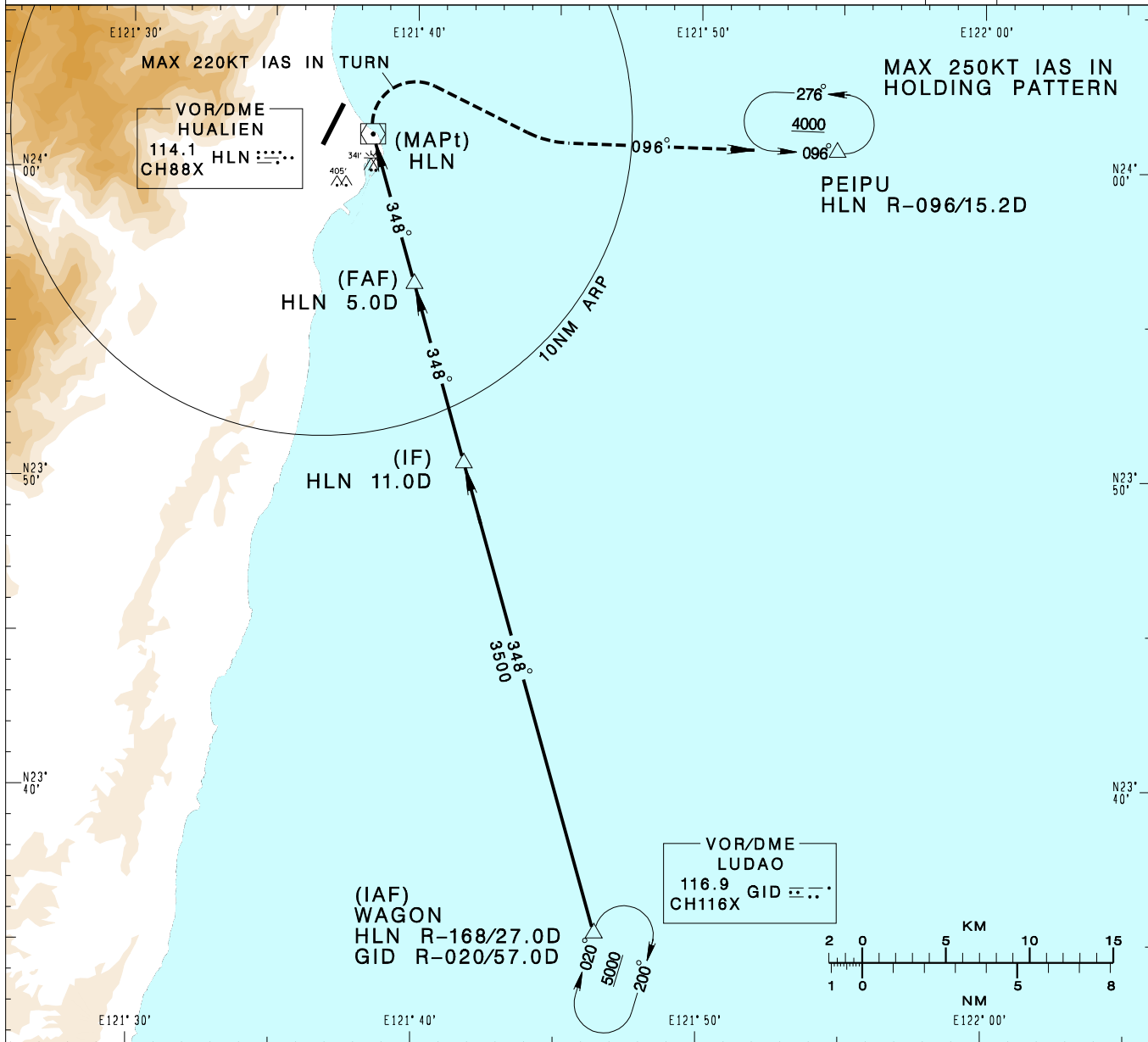


花蓮機場
HUALIEN AD

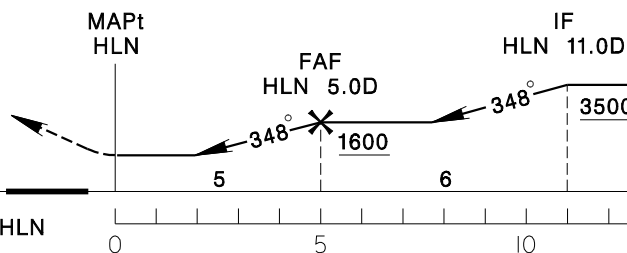
RCYU
VOR-B

TAIPEI APP 124.0 119.1 330.2 276.8				HUALIEN TWR 118.1 126.18 236.6				VAR 4° W 
Apt Elev: 51'		Rwy03 THR Elev: 44' Rwy21 THR Elev: 51'		Trans Level: FL130		Trans Alt: 11,000'		
BEARINGS ARE MAGNETIC; DISTANCES ARE NAUTICAL MILES; ELEVATIONS, HEIGHTS IN FEET								



MISSED APCH:
TURN RIGHT TO TRACK HLN R-096
TO PEIPU, MAINTAIN 4000 AND HOLD.

*MAX 220KT IAS IN TURN.



MINIMA (OCA IN FT, VIS IN M, OCH IN FT)

CATEGORY	A	B	C	D
CIRCLING	700/1900 649	700/2800 649	800/3700 749	800/4600 749

NOTE

1. CIRCLING NOT AUTHORIZED WEST OF RWY.
2. A 341ft MSL STACK AT 1.52NM EAST OF THR03.
3. A 405ft MSL TREE AT 1.18NM SE OF THR03.
4. CAUTION HIGH TERRAIN WEST OF THE AIRPORT.

* DME REQUIRED

CHANGES: NEW PAGE NUMBER